

*Milesight*



User Manual



Smart Tools



All Software & files can be downloaded from  
<https://www.milesight.com/support/download>

**Make Sensing Matter**

Milesight | [www.milesight.com](http://www.milesight.com)

*Milesight*

# QUICK START GUIDE

AI Dual-sensor 180° Panoramic Camera



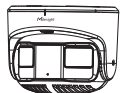
IP VIDEO SURVEILLANCE

---

## Table of Content

1. Package Contents.....	2
2. Hardware Overview.....	2
3. Dimensions.....	3
4. Installation.....	4
5. Assigning an IP Address by Using Smart Tools.....	8
6. Assigning an IP Address via Browser.....	10
7. Accessing from the Web Browser.....	10
8. FCC Statement .....	11

## 1. Package Contents



AI Dual-sensor 180°  
Panoramic Camera x 1



Water-proof  
Connector x 1



Quick Start Guide x 1



Warranty Card x 1

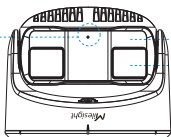


Screw Packet x 1

## 2. Hardware Overview

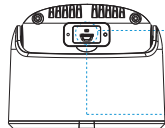
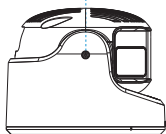


Microphone



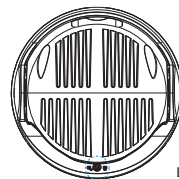
- IR LED Lights
- Lens

Vertical Limit Screw

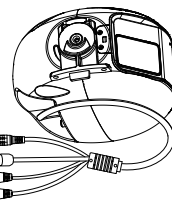


Reset

Micro SD/SDHC/  
SDXC Card Slot



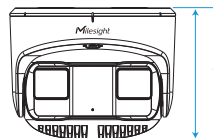
Horizontal Limit Screw



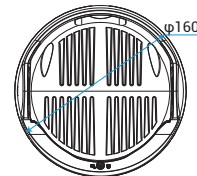
- DC 12V
- Ethernet Port (PoE+)
- Audio Out
- Alarm In/Out

## 3. Dimensions

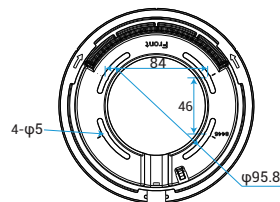
MS-C8477-PC



128



φ160

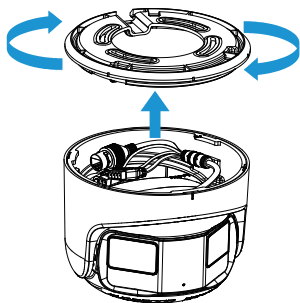


4-φ5

φ95.8

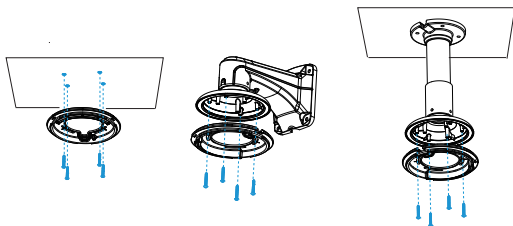
## 4. Installation

**Step1:** Rotate the camera unit to take off the camera mounting bracket.

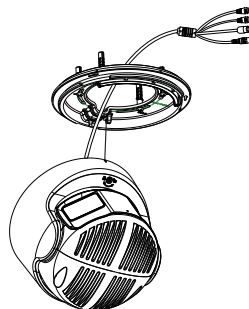


**Step2:** Fix the mounting bracket on the position by using the screw where the camera is intended to be installed.

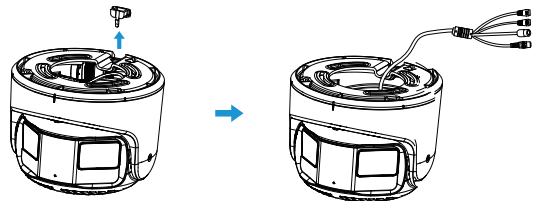
Wall Mount (A72) and Pendant Mount (A76) are available for installation.



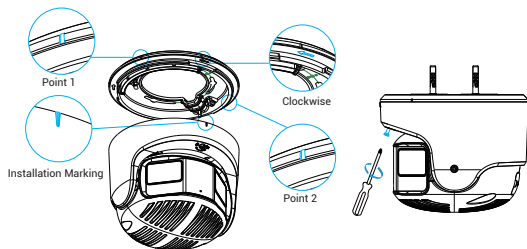
**Step3:** Hang the camera on the mounting bracket using wires and thread the tail cable of the device port into the mounting bracket.



**Note:** If there is no hole in the wall, the tail cable needs to be pulled out from the side, please remove the plug from the slot and make sure the tail cable is in the side wire trough before tightening the mounting bracket screws.

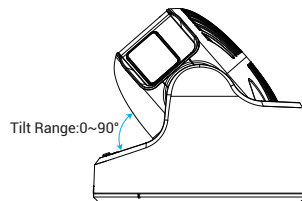
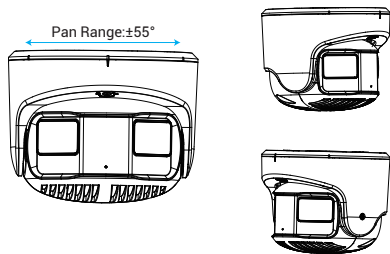


**Step4:** Install the camera to the mounting bracket by rotating it, ensure the installation marking is located between the two endpoints of the bracket mounting, and then tighten the horizontal limit screws.

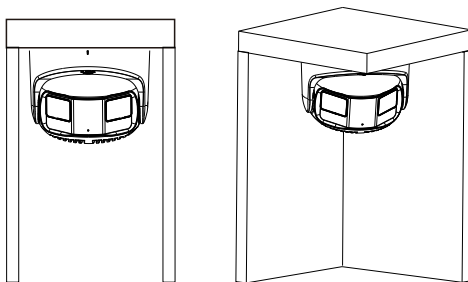


**Step5:** Adjust the camera position by loosening the vertical limit screw or rotating the camera to match the scene.

**Note:** You can adjust the camera angle as needed, the pan range is  $\pm 55^\circ$  and the tilt range is  $0\sim 90^\circ$ .



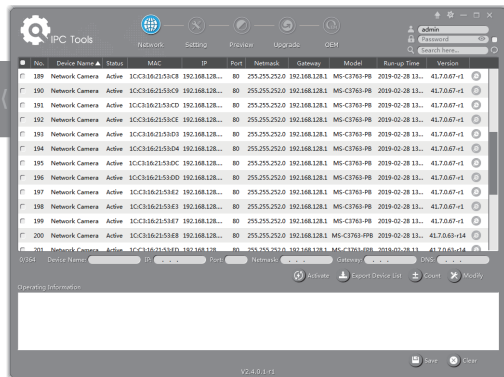
**Note:** Make sure the side of the camera is not too close to the wall or other objects.



**Step6:** Finish the installation.

## 5. Assigning an IP Address by Using Smart Tools

Smart Tools is a software tool which can automatically detect multiple online Milesight network cameras in the LAN, set IP addresses, and manage firmware upgrades. It's recommended to use when assigning IP addresses for multiple cameras.



The steps to change the IP of cameras are as below:

- 1) Start Smart Tools, click the IPC Tools page, then enter the device information, such as IP address, MAC address, Port number, Netmask, and Gateway, then all related Milesight network cameras in the same network that will be shown.
- 2) Select a camera or multiple cameras according to the MAC addresses.
- 3) Click "Activate" to set the password when using the cameras for the first time (Password must be 8 to 32 characters long, contain at least one number and one letter), and set three security questions (if you forget the password, you can reset the password by answering three security questions correctly).
- 4) Type the user name and password you set, change the IP address or other network values, and then click "Modify" button.
- 5) By double clicking the selected camera or the browser of interested camera, you can access the camera via web browser directly.

More usage of Smart Tools, please refer to the **"Smart Tools User Manual"**.

## 6. Assigning an IP Address via Browser

If the network segment of the computer and that of the camera are different, please add some 192.168.5.xx(255.255.255.0) for your PC to get access to your cameras, more details can be found on "Milesight Network Camera Quick Start".

## 7. Accessing from the Web Browser

The camera can be used with the most standard operating systems and browsers. The recommended browsers are Internet Explorer, Firefox, Chrome, Safari. More information about the plugin installation, please refer to the troubleshooting:

**5. Milesight-Troubleshooting-Plugin Installation on Windows-IPC**

**6. Milesight-Troubleshooting-Plugin Installation on MAC**

## 8. FCC Statement

Any changes or modifications not expressly approved by the party responsible for compliance could void the user's authority to operate the equipment. This device complies with part 15 of the FCC Rules. Operation is subject to the following two conditions:

1. This device may not cause harmful interference.
2. This device must accept any interference received, including interference that may cause undesired operation.

**Note:** This equipment has been tested and found to comply with the limits for a Class B digital device, pursuant to part 15 of the FCC Rules. These limits are designed to provide reasonable protection against harmful interference in a residential installation. This equipment generates, uses and can radiate radio frequency energy and, if not installed and used in accordance with the instructions, may cause harmful interference to radio communications. However, there is no guarantee that interference will not occur in a particular installation. If this equipment does cause harmful interference to radio or television reception, which can be determined by turning the equipment off and on, the user is encouraged to try to correct the interference by one or more of the following measures:

1. Reorient or relocate the receiving antenna.
2. Increase the separation between the equipment and the receiver.
3. Connect the equipment into an outlet on a circuit different from that to which the receiver is connected.
4. Consult the dealer or an experienced radio/TV technician for help.

### FCC Radiation Exposure Statement:

This equipment complies with FCC radiation exposure limits set forth for an uncontrolled environment. This equipment should be installed and operated with a minimum distance of 20cm between the radiator& your body. This transmitter must not be co-located or operating in conjunction with any other antenna or transmitter.

# **AI Dual-sensor 180° Panoramic Camera**

Thank you  
for choosing  
Milesight Product