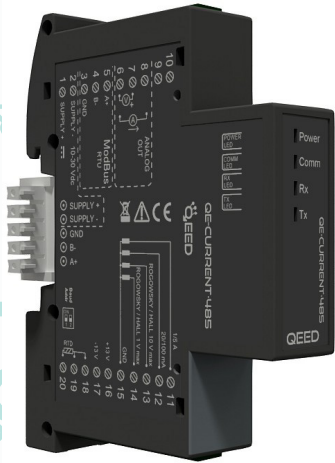




UNIVERSAL CURRENT CONVERTER AC/DC Current Analyzer **QE-CURRENT-485**



The QE-CURRENT-485 is the first **ALL IN ONE CURRENT CONVERTER / CURRENT ANALYZER** of the market. One DIN rail size, suitable for electric distribution boxes, allow you to measure the values of CURRENT measured by all the isolated primary current sensor available on the market. **Analog output and RS485 Modbus RTU available.**

POWER SUPPLY	10...30 Vdc, Protection against polarity reversal and overtemperature.
ABSORPTION	2,5 VA max
INPUT	
CURRENT SENSORS :	
<ul style="list-style-type: none"> • ROGOWSKI probes; • CURRENT TRANSFORMERS secondary 1A / 5A; • CURRENT TRASDUCERS secondary +/-10V ac/dc or +/- 1 V ac/dc; • CURRENT TRASDUCERS with secondary 100mA ac/dc; • HALL'S EFFECT, included its Power supply (+/-13V dc) 	
TEMPERATURE :	
PT100 2-3 wires or NTC (10k ohm/ 100k ohm);	
ACCURACY	* for 1A / 5A Current Transformers input
CURRENT*:	
0,01 In < I < 0,05 In : +/- 1 %	
0,05 In < I < Imax : +/- 0,5%	
TEMPERATURE : 0,2 % f.s. for PT100	
SAMPLING RATE	6400 Hz @ 50Hz
THERMAL DRIFT	< 100ppm/°C
HARMONIC ANALYSIS	Up to 63rd (Available on QE-CURRENT-485-H version)
OUTPUT	
<ul style="list-style-type: none"> • RS485 MODBUS RTU • 0...10V / 0...20mA (fully configurable) 	
ANALOG OUTPUT ACCURACY	< 0,1% F.S.
BAUDRATE	from 1200...115200 Baud (default 9600)
GENERAL	
WORKING TEMPERATURE	-10°C... +60°C
HUMIDITY	10...90% not condensing
PROTECTION INDEX	IP20
STANDARDS CE	EN61000-6-3; EN61000-4-2; EN61000-4-3; EN61000-4-4; EN61000-4-5 ; EN61000-4-6 ; EN61010-1
TERMINALS	n°10 Removable terminals 3,5mm
DIMENSIONS	93x17,7x 68,3 mm (terminal excluded)
MOUNTING	Ready to be mounted on Din rail bus

- Measurement available:**
- **I_{rms}, I_{dc}, I_{ac}**
 - **I_{rms} max, I_{rms} min, I_{rms} average**
 - **I_{dc} max, I_{dc} min, I_{dc} average**
 - **I_{ac} max, I_{ac} min, I_{ac} average**
 - **Ah on I_{rms}, Ah on I_{dc}, Ah on I_{ac}**
 - **Temperature**
 - **Resistance**
- More measurement available with QE-CURRENT-485-H :**
- **THD**
 - **I_{peak}**
 - **Frequency**
 - **Crest Factor**
 - **Harmonic analysis**

Available in two different versions:

QE-CURRENT-485 : Current Converter, Analog Output and RS485 Modbus; RMS, AC and DC measurement, min Max and Average measurement. Temperature and resistance measurement

QE-CURRENT-485-H : Current Converter and Analyzer, Analog Output, RS485 Modbus. Harmonic analysis option included, THD, Frequency, Crest Factor and Internal Temperature measurement.

ALTITUDINE	Up to 2000 m s.l.m.
WEIGHT	55 gr.
PLASTIC CASE	PBT, grey
DIP-SWITCH	2 poles (Baudrate and Address) for configuration by FACILE QE-CURRENT-485
LED	N°4: Power on (green), Comm (yellow), TX and RX (red).
CONFIGURATION	By free interface software FACILE QE-CURRENT-485 or by RS485 Modbus register map

UNIVERSAL CURRENT CONVERTER
AC/DC Current Analyzer **QE-CURRENT-485**





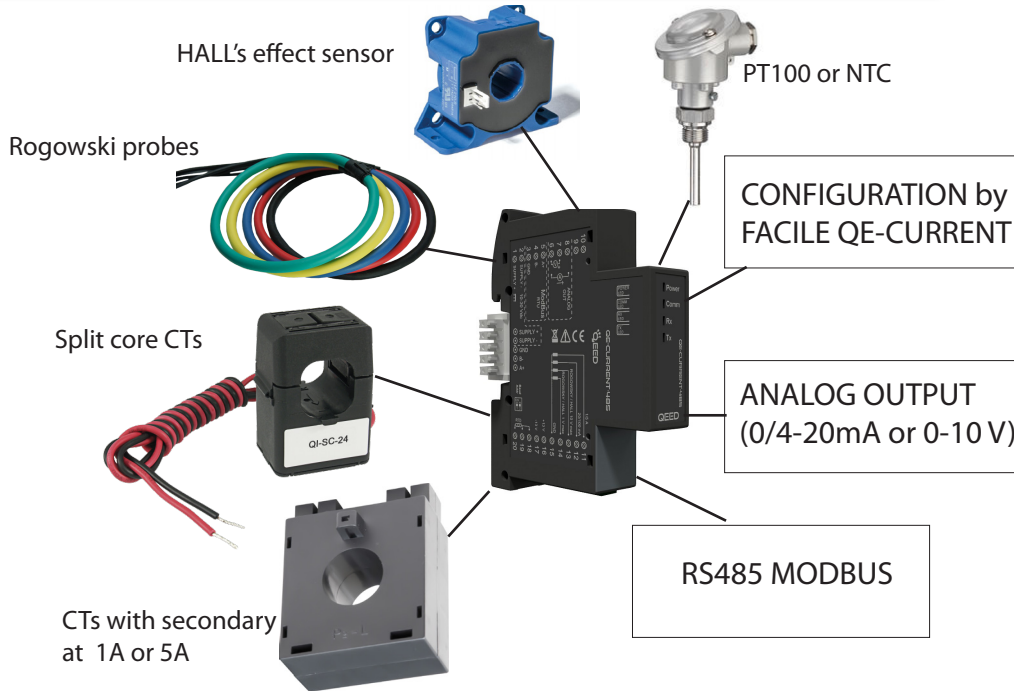
QEED

QUALITY ELECTRONIC DESIGN

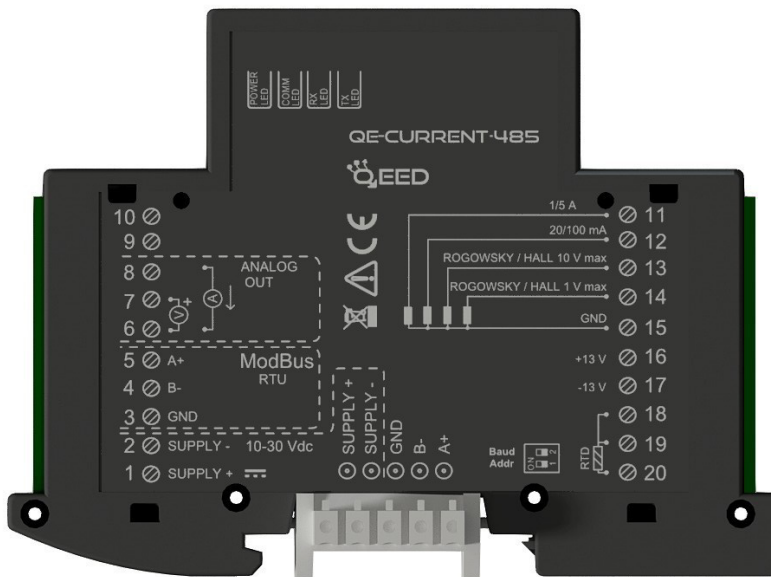
QEED
WWW.QEED.IT
INFO@QEED.IT

D.E.M. S.p.A.
WWW.DEM-IT.COM

UNIVERSAL CURRENT CONVERTER AC/DC Current Analyzer **QE-CURRENT-485**



CONNECTIONS :

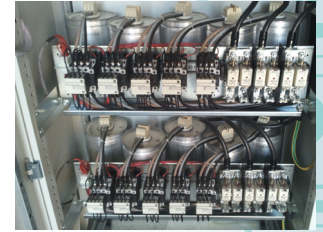


Free Interface software FACILE QE-CURRENT-485 available for the configuration of the device or direct by RS485 Modbus registers.

Power Supply and RS485 connection can be made by TBUS connector (option) mounted on the base of the modules.



WATER INDUSTRIES



PF CORRECTION



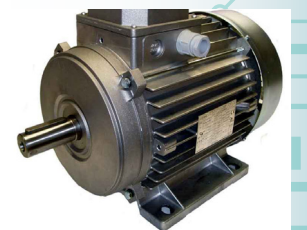
STEEL MILLS



PAPER MILLS



ELECTRIC POWER DISTRIBUTION SYSTEM



MOTORS

UNIVERSAL CURRENT CONVERTER
AC/DC Current Analyzer
QE-CURRENT-485

The first universal Current Analyzer of the market!

QEED THE ELECTRONIC BRAND OF **D.E.M.** S.p.A.

DEM S.p.A. - Z.I. Villanova, 20 - 32013 Longarone (BL), Italy - www.dem-it.com - Ph. +39 0437 761021