

tSH-700 Series User Manual

Ver.1.0

Tiny Serial Port Sharer



WARRANTY

All products manufactured by ICP DAS are warranted against defective materials for a period of one year from the date of delivery to the original purchaser.

WARNING

ICP DAS assumes no liability for damages consequent to the use of this product. ICP DAS reserves the right to change this manual at any time without notice. The information furnished by ICP DAS is believed to be accurate and reliable. However, no responsibility is assumed by ICP DAS for its use, nor for any infringements of patents or other rights of third parties resulting from its use.

COPYRIGHT

Copyright © 2014 by ICP DAS. All rights are reserved.

TRADEMARKS

Names are used for identification purposes only and may be registered trademarks of their respective companies.

CONTACT US

If you have any questions, please feel free to contact us via email at:

service@icpdas.com, service.icpdas@gmail.com

SUPPORT

This manual relates to the following modules:
tSH-722, tSH-732, tSH-725, tSH-735
tSH-724, tSH-734





TABLE OF CONTENTS

PACKING LIST	3
MORE INFORMATION	3
1. INTRODUCTION	4
1.1 SPECIFICATIONS.....	6
1.2 APPEARANCE	7
1.3 PIN ASSIGNMENTS	9
2. SETTING UP THE TSH-700 MODULE	10
3. WEB CONFIGURATION	20
3.1 LOGGING IN TO THE TSH-700 WEB SERVER	20
3.2 HOME PAGE	22
3.3 APPLICATION MODE.....	23
3.4 SERIAL PORT PAGE.....	26
3.4.1 <i>Port1 Settings</i>	26
3.5 NETWORK SETTING	28
3.5.1 <i>Network and Miscellaneous Settings</i>	28
3.5.2 <i>IP Address Settings</i>	29
3.5.3 <i>General Settings</i>	31
3.5.4 <i>Restore Factory Defaults</i>	33
3.5.5 <i>Firmware Update</i>	35
3.6 FILTER PAGE	36
3.6.1 <i>Accessible IP Settings (white list)</i>	36
3.7 MONITOR PAGE	37
3.8 CHANGE PASSWORD	37
3.9 LOGOUT PAGE	38





Packing List

The shipping package includes the following items:



One tSH-700 series hardware module



One Quick Start Guide



One Software Utility CD



DC Connector Power Cable



Note:

If any of these items are missing or damaged, please contact the local distributor for more information. Save the shipping materials and cartons in case you need to ship the card in the future.

More Information

Documentation

CD:\NAPDOS\tSH-700\Document

<http://ftp.icpdas.com/pub/cd/tinymodules/napdos/tSH-700/document/>

Firmware

CD:\NAPDOS\tSH-700\Firmware

<http://ftp.icpdas.com/pub/cd/tinymodules/napdos/tSH-700/firmware/>

Software

CD:\NAPDOS\Software

<http://ftp.icpdas.com/pub/cd/tinymodules/napdos/software/>



1. Introduction

Following the success of the original tGW-700/tDS-700 modules, ICP DAS has continued to develop new functions for these products in order to provide increased support for a greater number of applications. The tSH-700 module is a serial port sharer that provides a number of functions, including "Baud Rate Conversion", "Modbus RTU/ASCII Conversion" and "Two Masters Share One Slave". The built-in web server provides easy configuration interface, and no console commands are required.

- **Baud Rate Conversion:** This function allows a single master device to communicate with slave devices using different baud rates and data formats. Most query-response protocols (half-duplex), e.g. DCON, are supported in the raw data mode. Full-duplex communication should also work when the data size is smaller than the built-in 512 bytes buffer on each serial port.



- **Modbus RTU/ASCII Conversion:** This function allows a single Modbus RTU/ASCII master device to communicate with Modbus RTU/ASCII slave devices using different protocols, baud rates and data formats.



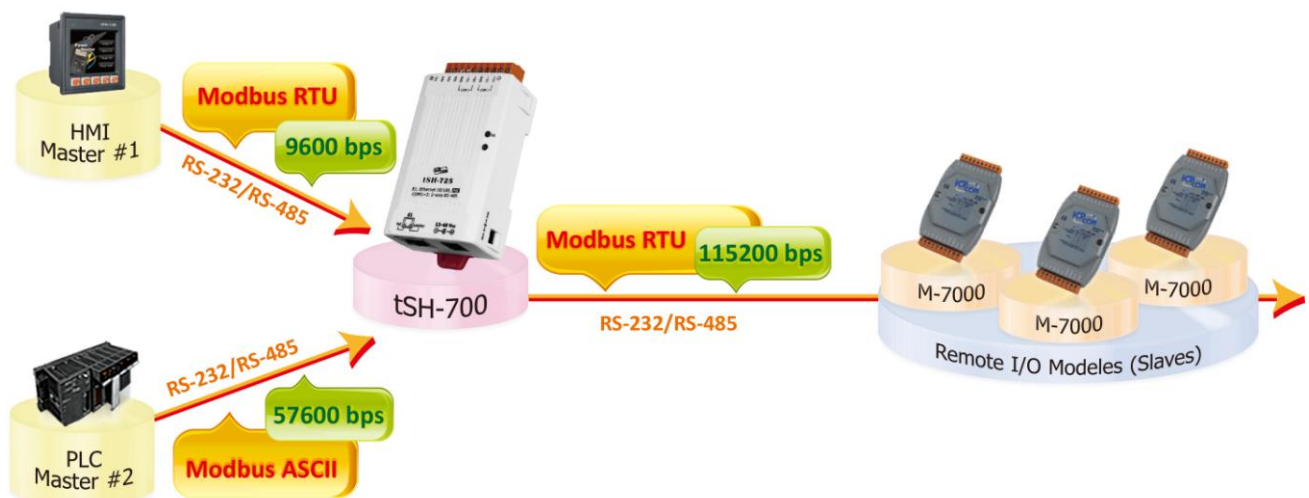


- **Two Masters Share One Slave:** This function allows two master devices connected to different serial ports to share slave devices. Modbus mode can be used to convert the Modbus RTU/ASCII protocols, while raw data mode can be used for DCON or other query-response protocols. Different baud rates and data formats can also be used on the different serial ports. The built-in cache function reduces the loading of serial communication on the slave port by removing duplicated queries when the two master devices are requesting the same information.

● **Two Masters Share Slave Devices in Raw Data Mode with Baud Rates Conversion**



● **Two Masters Share Slave Devices with Protocols and Baud Rates Conversion**





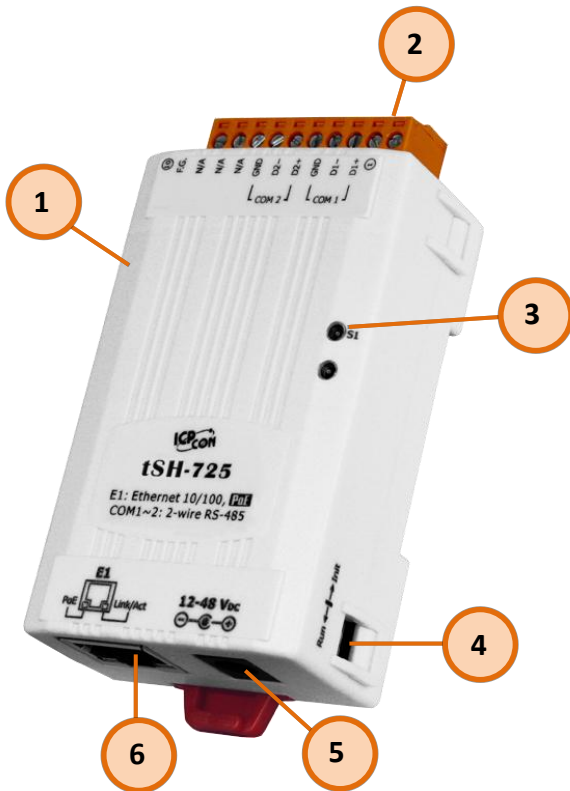
1.1 Specifications

Models	tSH-722	tSH-732	tSH-725	tSH-735	tSH-724	tSH-734
System						
CPU	32-bit ARM					
Communication Interface						
Ethernet	10/100 Base-TX, 8-pin RJ-45 x 1, (Auto-negotiating, Auto-MDI/MDIX, LED indicator) PoE (IEEE 802.3af, Class 1)					
COM1	5-wire RS-232	3wire RS-232	2-wire RS-485	2-wire RS-485	2-wire RS-485	2-wire RS-485
COM2	5-wire RS-232	3wire RS-232	2-wire RS-485	2-wire RS-485	5-wire RS-232	3wire RS-232
COM3	-	3wire RS-232	-	2-wire RS-485		3wire RS-232
Self-Tuner	-		Yes, automatic RS-485 direction control			
RS-485	Bias Resistor	-		Yes, 1 K Ω		
	Node	-		254 (max.)		
UART	16c550 or compatible					
COM Port Format						
Baud Rate	115200 bps Max.					
Data Bit	5, 6, 7, 8					
Parity	None, Odd, Even, Mark, Space					
Stop Bit	1, 2					
Power						
Power	PoE	IEEE 802.3af, Class 1				
Input	DC Jack	+12 ~ 48 V _{DC}				
Power Consumption	0.07 A @ 24 V _{DC}					
Mechanism						
Connector	10-Pin Removable Terminal Block x 1					
Mounting	DIN-Rail					
Environment						
Operating Temperature	-25 ~ +75 °C					
Storage Temperature	-30 ~ +80 °C					
Humidity	10 ~ 90% RH, Non-condensing					



1.2 Appearance

Front View



1. Robust Insulated Case

2. Serial COM Ports

The number of serial COM Ports available depends on the type of tSH-700 module. For more detailed information regarding the pin assignments for the serial COM ports, refer to Section 1.3 Pin Assignments.

3. S1: System LED indicator

Once power is supplied to the tSH-700 module, the system LED indicator will illuminate. An overview of the LED functions is given below:

Function	System LED Behavior
Running Firmware	Steady ON
Network Ready	Slow flashing – Once every 3 seconds
Serial Port Busy	Rapid flashing – Once every 0.2 seconds

4. Operating Mode Switch



Init Mode: Configuration mode

Run Mode: Firmware operation mode

For tSH-700 series modules, the operating mode switch is set to the **Run** position by default. In order to update the firmware for the tSH-700 module, the switch must be moved from the **Run** position to the **Init** position. The switch must be returned to the Run position after the update is complete.



5. +12 to +48 V_{DC} Jack:



The tSH-700 is equipped with a +12 V_{DC} to +48 V_{DC} jack that can be used to connect a power supply. If no PoE switch is available on site, a DC adapter can be used to power the tSH-700 module.

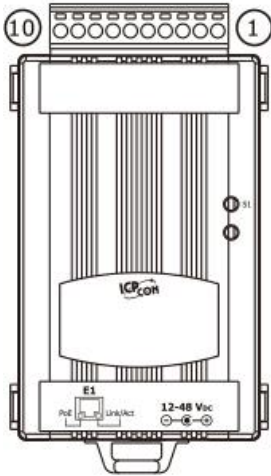
6. PoE and Ethernet RJ-45 Jack



The tSH-700 module is equipped with an RJ-45 jack that is used as the 10/100 Base-TX Ethernet port and features networking capabilities. When an Ethernet link is detected and an Ethernet packet is received, the **Link/Act LED (Orange)** indicator will be illuminated. When power is supplied via PoE (Power-over-Ethernet), the **PoE LED (Green)** indicator will be illuminated.



1.3 Pin Assignments



tSH-722		
	10	F.G.
	09	CTS2
COM2	08	RTS2
	07	RxD2
	06	TxD2
	05	GND
	04	CTS1
COM1	03	RTS1
	02	RxD1
	01	TxD1


tSH-725		
	10	F.G.
	09	N/A
	08	N/A
	07	N/A
	06	GND
COM2	05	D2-
	04	D2+
	03	GND
COM1	02	D1-
	01	D1+

tSH-724		
	10	F.G.
	09	N/A
	08	CTS2
	07	RTS2
COM2	06	GND
	05	RxD2
	04	TxD2
	03	GND
COM1	02	D1-
	01	D1+

tSH-732		
	10	F.G.
	09	GND
COM3	08	RxD3
	07	TxD3
	06	GND
COM2	05	RxD2
	04	TxD2
	03	GND
COM1	02	RxD1
	01	TxD1

tSH-735		
	10	F.G.
	09	GND
COM3	08	D3-
	07	D3+
	06	GND
COM2	05	D2-
	04	D2+
	03	GND
COM1	02	D1-
	01	D1+

tSH-734		
	10	F.G.
	09	GND
COM3	08	RxD3
	07	TxD3
	06	GND
COM2	05	RxD2
	04	TxD2
	03	GND
COM1	02	D1-
	01	D1+

 Note that the CTS and RTS pins of the tSH-722 and tSH-724 are reserved and have no function.



2. Setting up the tSH-700 Module

This chapter provides detailed information about the “Self-Test” process, which is used to confirm that the tSH-700 series module is operating correctly. Before beginning the “Self-Test” process, the wiring test, Ethernet configuration and eSearch utility driver installation procedures must first be fully completed. Follow the procedure described below:

Step 1: Connecting the Power Supply and the Host PC

1. Ensure that the network settings on your PC are configured correctly.
2. Ensure that the Windows firewall or any Anti-Virus firewall software is correctly configured or temporarily disable these functions; otherwise the **“Search Servers”** function in the eSearch Utility may not work as required. You may need to contact your System Administrator for more details of how to do this.
3. Check that the Init/Run switch is in the **“Run”** position.

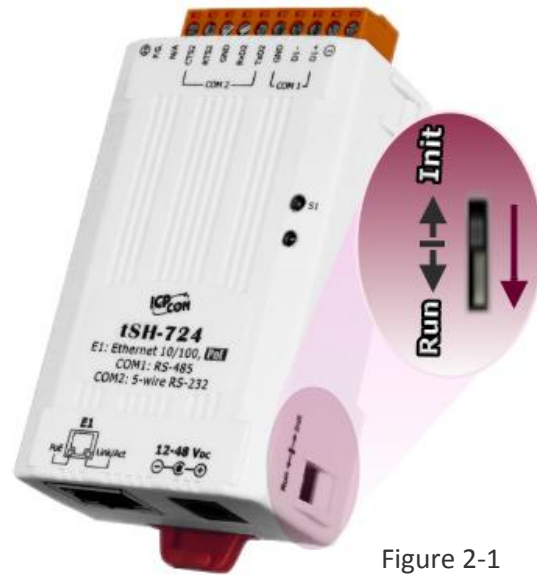


Figure 2-1

4. Connect both the tSH-700 and the Host computer to the same sub-network or the same Ethernet Switch, and then power on the tSH-700. Refer to **Figures 2-2 and 2-3** for illustrations of how to do this.



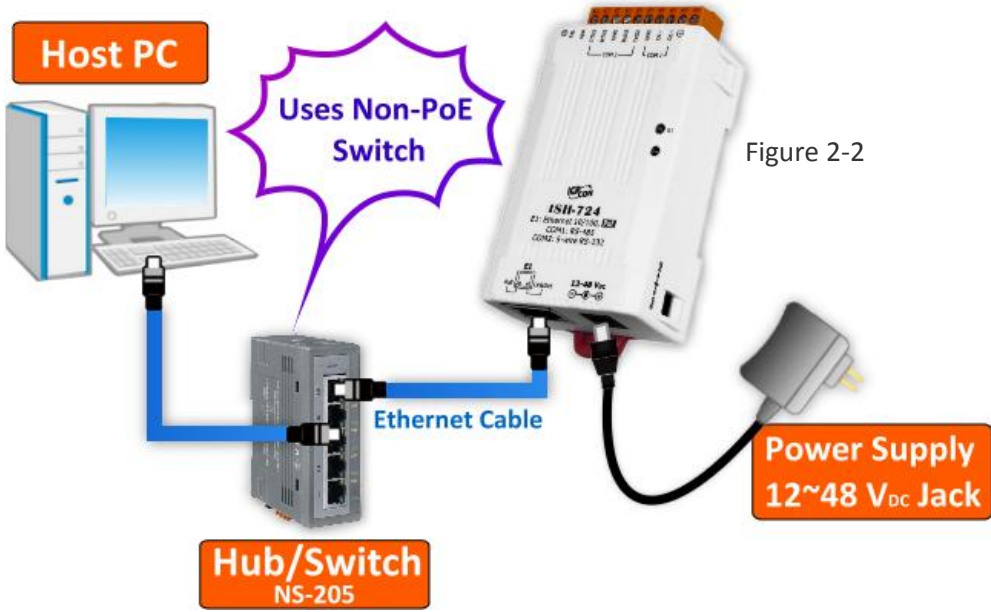


Figure 2-2

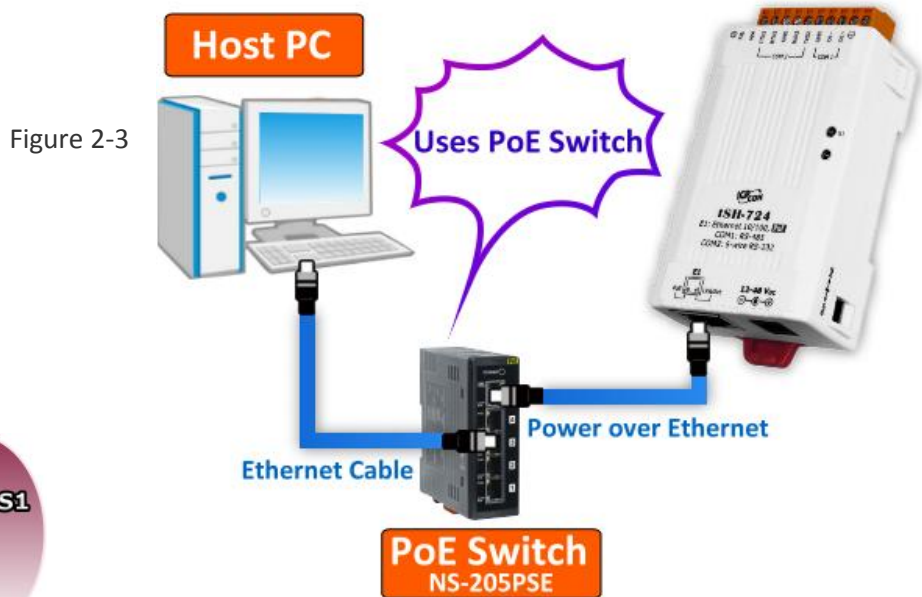


Figure 2-3



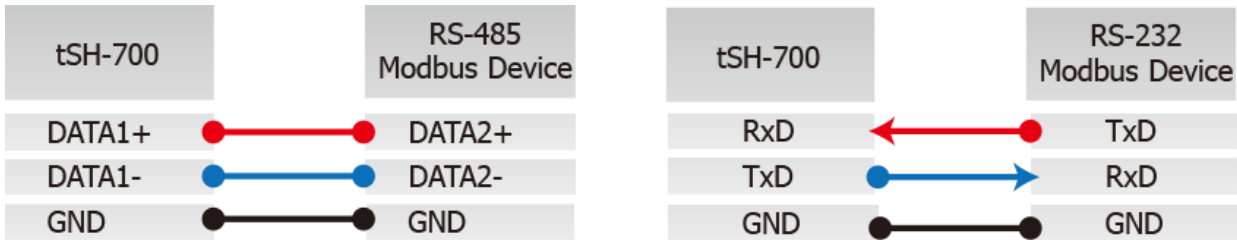
Figure 2-4

5. Verify that the System LED indicator is flashing.

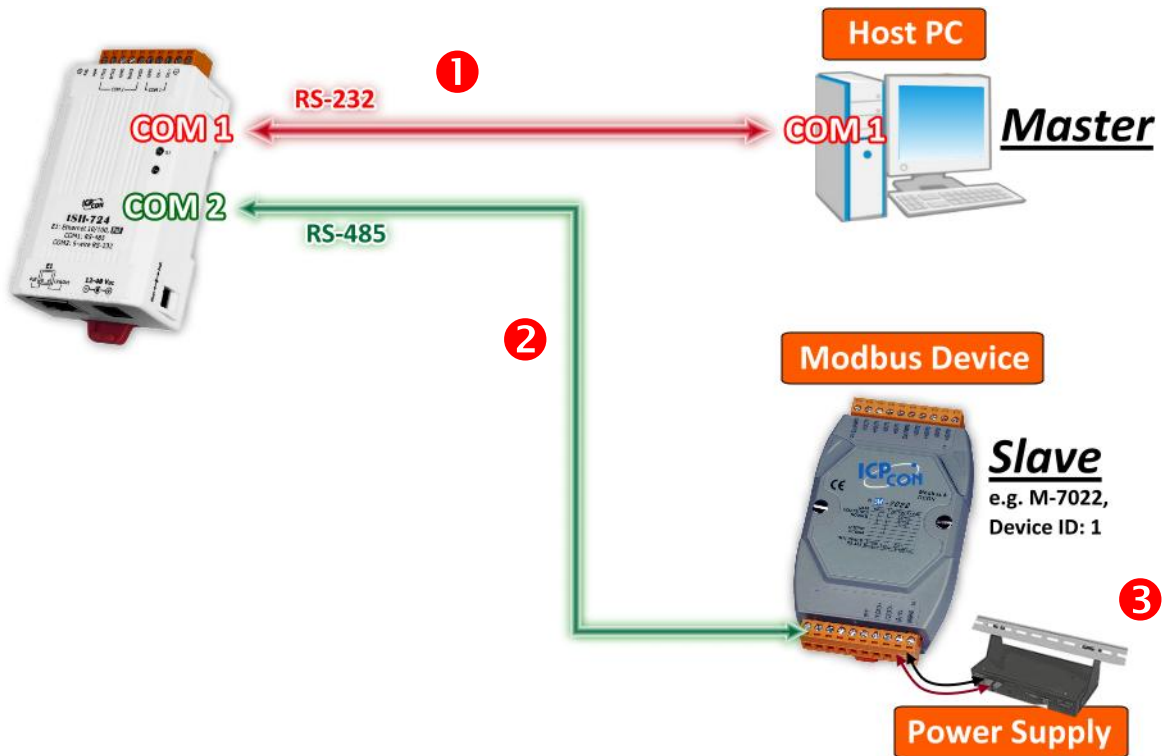


Step 2: Connecting the Master and Slave Devices

1. Connect the serial port of PC (Master) to COM1 on the tSH-700.
2. Connect the Modbus device (Slave, e.g. M-7022, optional) to COM2 on the tSH-700.





3. Supply power (+10 ~ +30 V_{DC}) to the Modbus device (e.g. M-7022, Device ID: 1)







Step 3: Installing the Software on your PC

1. Decompress **eSearch Utility**, which can be obtained from the companion CD-ROM, the ICP DAS FTP site, or the ICP DAS web site. The location of the install files on the CD and the download addresses are shown below:

	CD: \NAPDOS\software\eSearch\
	http://ftp.icpdas.com/pub/cd/tinymodules/napdos/software/esearch/

2. Install **Modbus Utility**, which can be obtained from the companion CD-ROM, the ICP DAS FTP site, or the ICP DAS web site. The location of the install files on the CD and the download addresses are shown below:

	CD: \NAPDOS\Software\Modbus_UTILITY
	http://ftp.icpdas.com/pub/cd/tinymodules/napdos/software/modbus_utility/



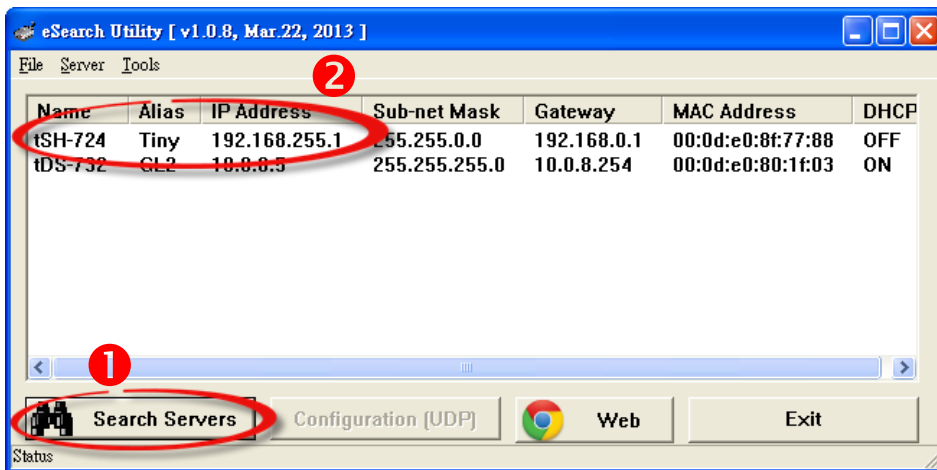


Step 4: Configuring the Correct Network Settings

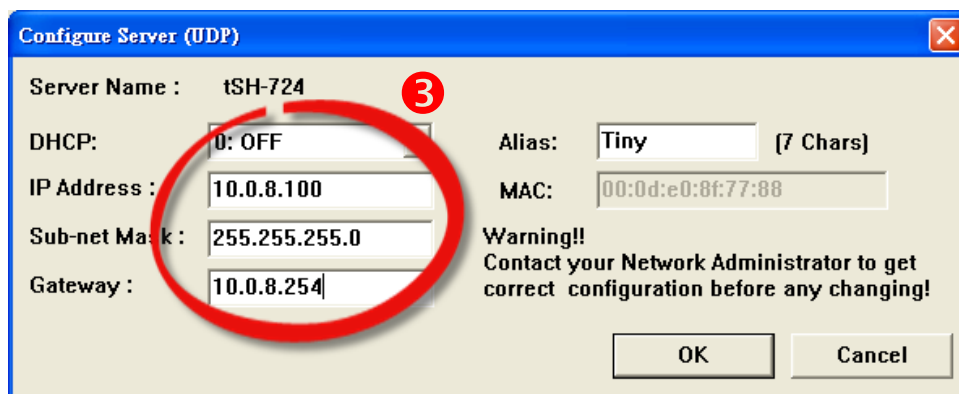
1. Open the eSearch Utility and then click the **“Search Servers”** button to search for the tSH-700 module. Factory Default Settings for the tSH-700:

IP Address:	192.168.255.1
Sub-net Mask:	255.255.0.0
Gateway Address:	192.168.0.1

2. Once the search process is complete, double-click the name of the tSH-700 module to open the **“Configure Server”** dialog box.

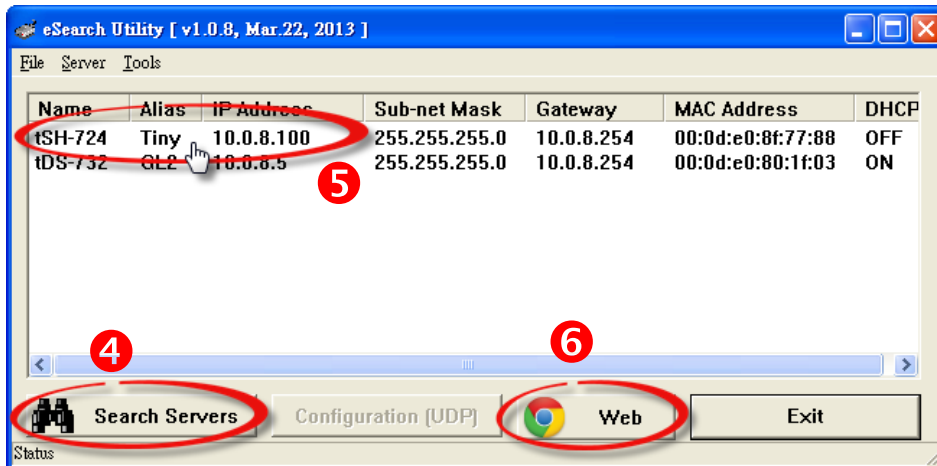


3. Enter the network settings information, including the **IP, Mask and Gateway addresses**, and then click **“OK”** button. The new settings for the tSH-700 will take effect within 2 seconds. If you don't know the correct network configuration information, contact your Network Administrator to obtain the details.



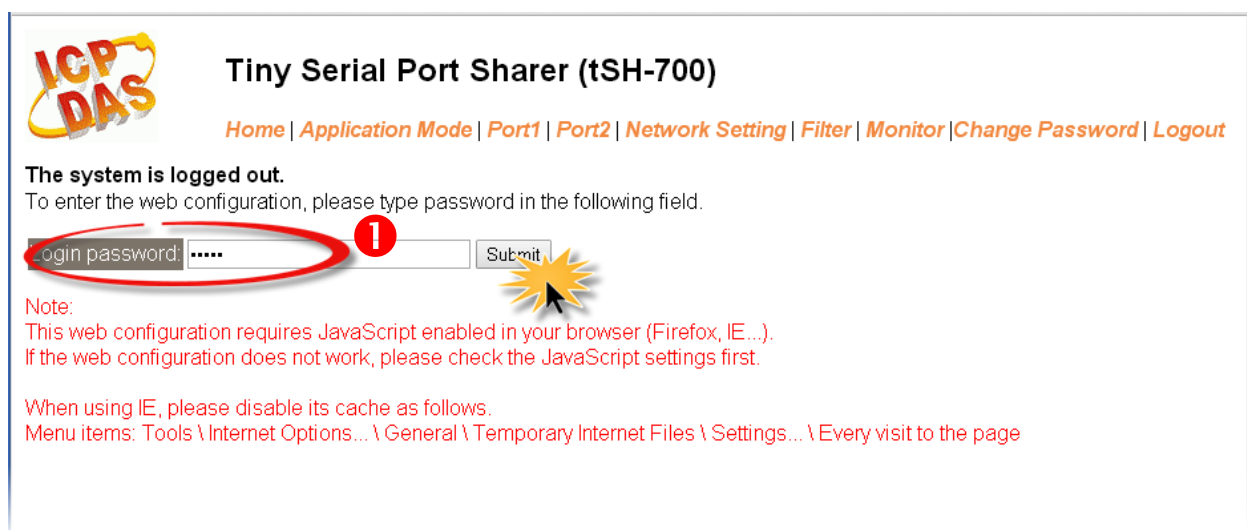


4. Wait 2 seconds and then click the **“Search Servers”** button again to ensure that the tSH-700 is working correctly with the new configuration.
5. Click the name of the tSH-700 to select it.
6. Click the **“Web”** button to log in to the web configuration pages. (Or enter the URL address of the tSH-700 in the address bar of the browser.)



Step 5: Configuring the Application Mode

1. Enter the password (use the default password **“admin”**) in the Login password field and click the **“Submit”** button.





2. Click the **“Application Mode”** tab to display the **Application Mode Settings** page.
3. Check the **“RAW Data (Half-Duplex)”** option
4. Select the M-7022 (slave device) connected to COM port of the tSH-700 (e.g. **“Port2”**) from the **“Slave Device Connected on:”** option button.
5. Enter the timeout value of the Port2 (e.g. **“500”**) in the **“Slave Timeout (ms)”** field and click the **“Submit”** button to save your settings.

ICP DAS Tiny Serial Port Sharer (tSH-700)

Home | **Application Mode** | Port1 | Port2 | Network Setting | Filter | Monitor | Change Password | Log

3 RAW Data (Half-Duplex)

4 Slave Devices Connected on : Port 1 Port 2 Port 3

Protocol : Port1: RTU , Port2: RTU , Port3: RTU
Slave Devices Connected on : Port 1 Port 2 Port 3

Slave Timeout (ms): 500 **5**

Submit



Step 6: Configuring the Serial Port

1. Click the **"Port1"** tab to display the **Port1 Settings** page.
2. Select the appropriate **Baud Rate and Data Format** settings depending on the serial COM Port of PC (Master) from the relevant drop down options. (e.g. **Baud Rate: 9600 and Data Format: 8N1**)
3. Click the **"Submit"** button to save your settings.

Tiny Serial Port Sharer (tSH-700)

Home | Application Mode | **Port1** | Port2 | Network Setting | Filter | Monitor | Change Password

Port Settings	Current	Updated
Baud Rate (bps):	115200	9600 bits/S
Data Size (bits):	8	8 bits/character
Parity:	None	None
Stop Bits(bits):	1	1

Sharer Settings	Current	Updated
CRC/LRC Confirm:	NO	NO
Char Timeout (bytes)	5	5 (4 ~ 15, Default)
Read Cache (ms)	0	0 (10, 20... 65530, Default)

Submit

4. Click the **"Port2"** tab to display the **Port2 Settings** page.
5. Select the appropriate **Baud Rate and Data Format** settings depending on the M-7022 (Slave) from the relevant drop down options. (e.g. **Baud Rate: 115200 and Data Format: 8N1**)
6. Click the **"Submit"** button to save your settings.

Tiny Serial Port Sharer (tSH-700)

Home | Application Mode | Port1 | **Port2** | Network Setting | Filter | Monitor | Change Password | Log

Port Settings	Current	Updated
Baud Rate (bps):	115200	115200 bits/S
Data Size (bits):	8	8 bits/character
Parity:	None	None
Stop Bits(bits):	1	1

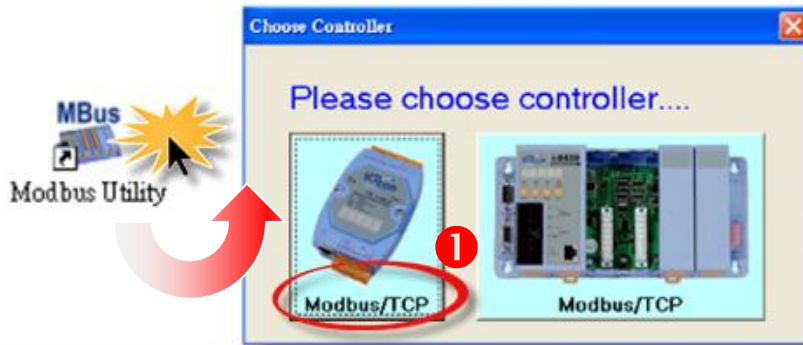
Sharer Settings	Current	Updated
CRC/LRC Confirm:	NO	NO
Char Timeout (bytes)	5	5 (4 ~ 15, Default: 4)
Read Cache (ms)	0	0 (10, 20... 65530, Default)

Submit

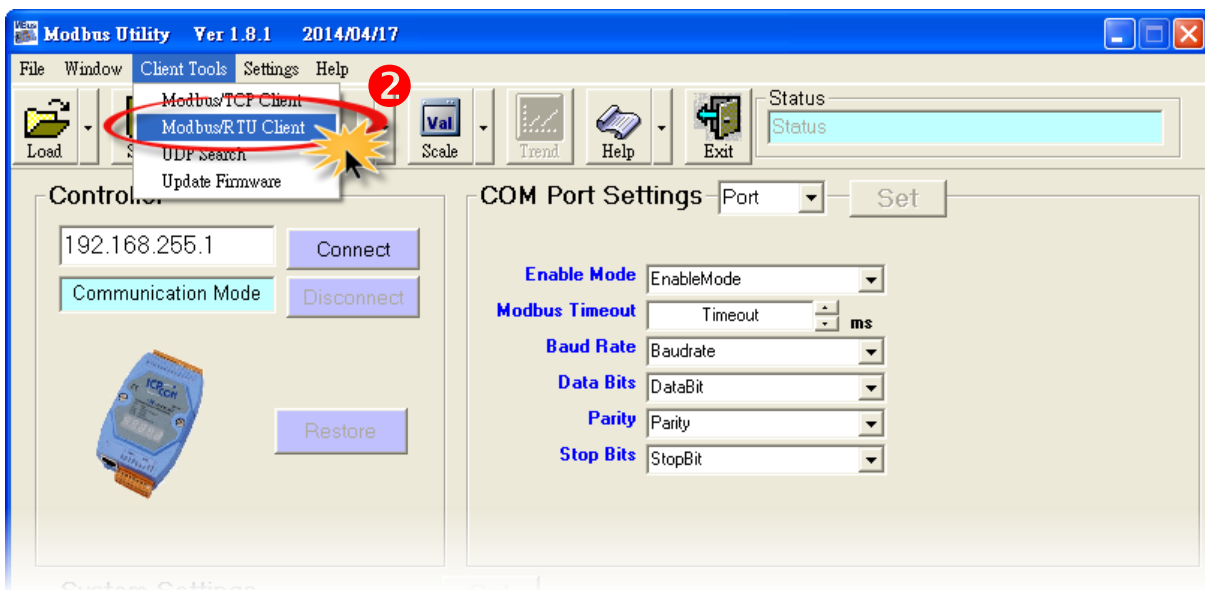


Step 7: Testing your tSH-700 Module

1. Double click the Modbus Utility shortcut on the desktop, and then click the **“Modbus/TCP”** button.

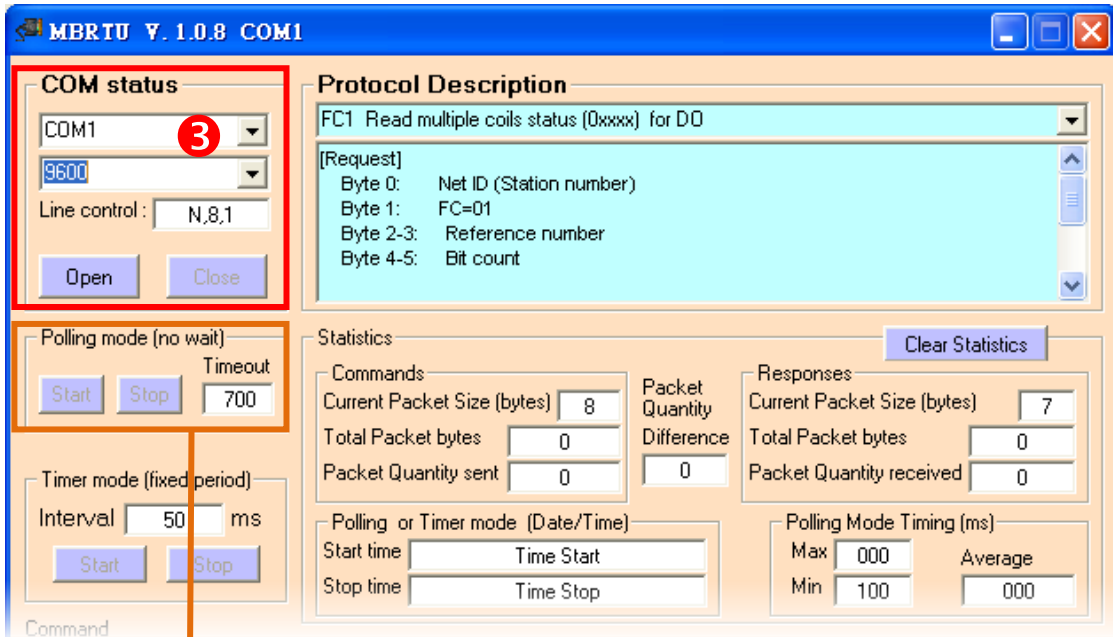



2. Click on **“Client tools”** → **“Modbus/RTU Client”**.



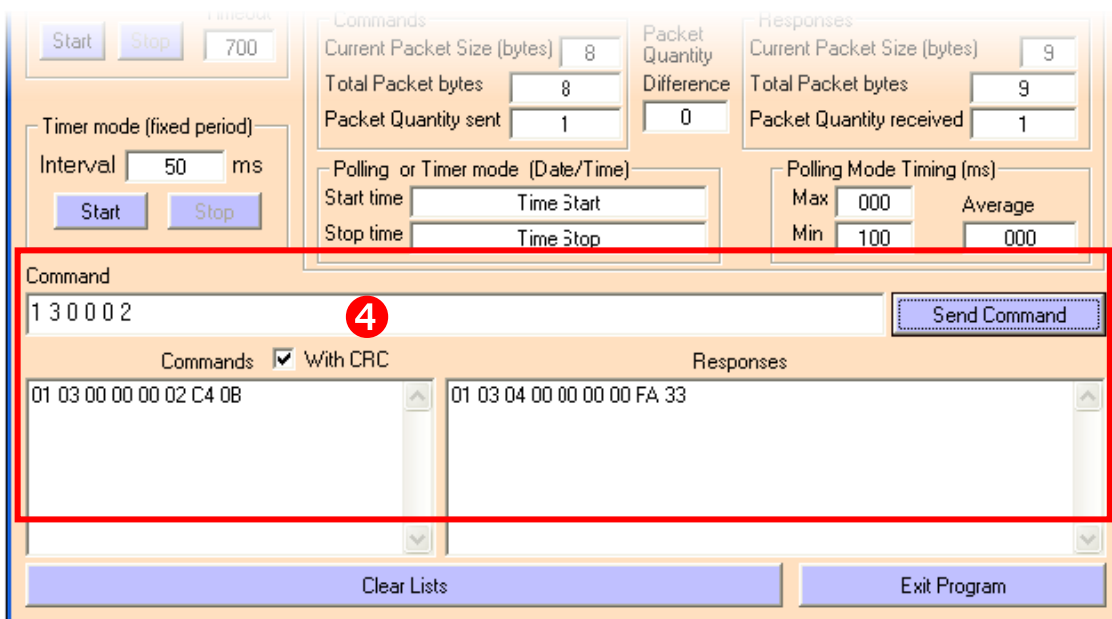


3. Select your COM port, Baud Rate and Data Format (e.g. COM1/9600/N,8,1) on the PC (Master) and then click the “Open” button in the “COM status” section.



 If you use the Modbus polling mode, please note that the Slave timeout in the port which the Slave Device connected on must be smaller than the timeout value in your application software (e.g. Modbus Utility). It cannot be less than 100 ms.

4. Refer to “Protocol Description” section and type the command in the “Command” field then click the “Send command” button. If the response data is correct, it means the test is success.





3. Web Configuration

Once the tSH-700 module has been correctly configured and is functioning on the network normally, the configuration details can be retrieved or modified using either the eSearch Utility or a standard web browser.

Note that if the tSH-700 module does not use the power supply via PoE (Power-over-Ethernet), you can remove the Ethernet cable when web configuration is completed.

3.1 Logging in to the tSH-700 Web Server

The embedded tSH-700 series web server can be accessed from any computer that has an Internet connection.

Step 1: Open a new browser window.

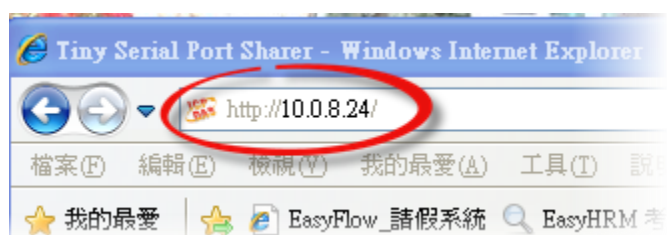
Open a web browser, for example, Google Chrome, Firefox or Internet Explorer, which are reliable and popular Internet browsers that can be used to configure tSH-700 module.



Note that if you intend to use Internet Explorer, ensure that the cache function is disabled in order to prevent browser access errors. Detailed instructions for how to do this can be found in [“FAQ: How to avoid a browser access error that causes a blank page to be displayed when using Internet Explorer”](#).

Step 2: Enter the URL for the tSH-700 web server

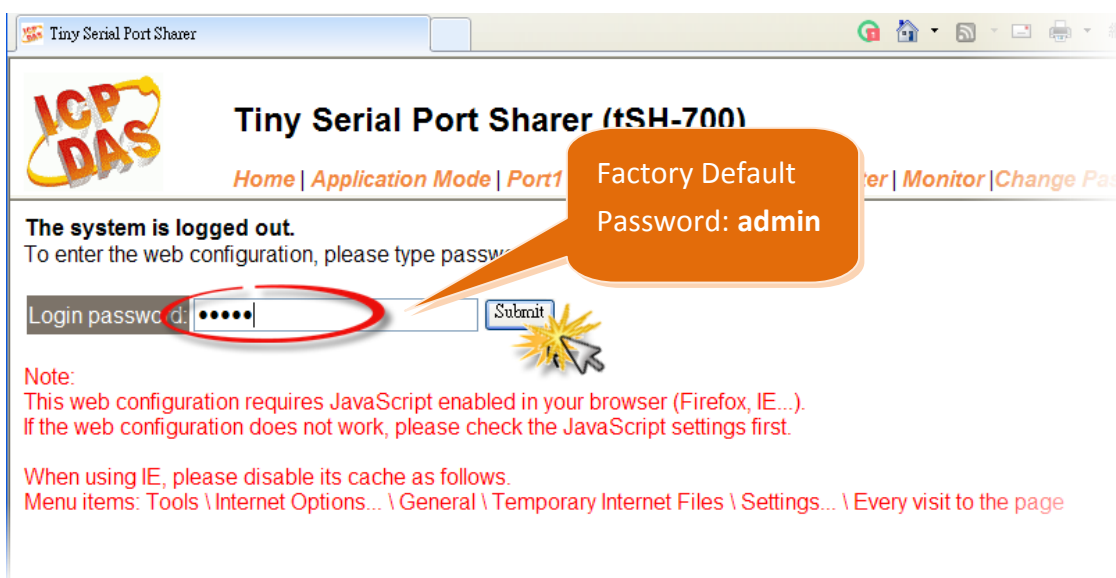
Ensure that you have correctly configured the network settings for the tSH-700 module (refer to [Chapter 3 Setting up the tSH-700 module](#) for detailed instructions), and then enter the URL for the tSH-700 web server in the address bar of the browser.





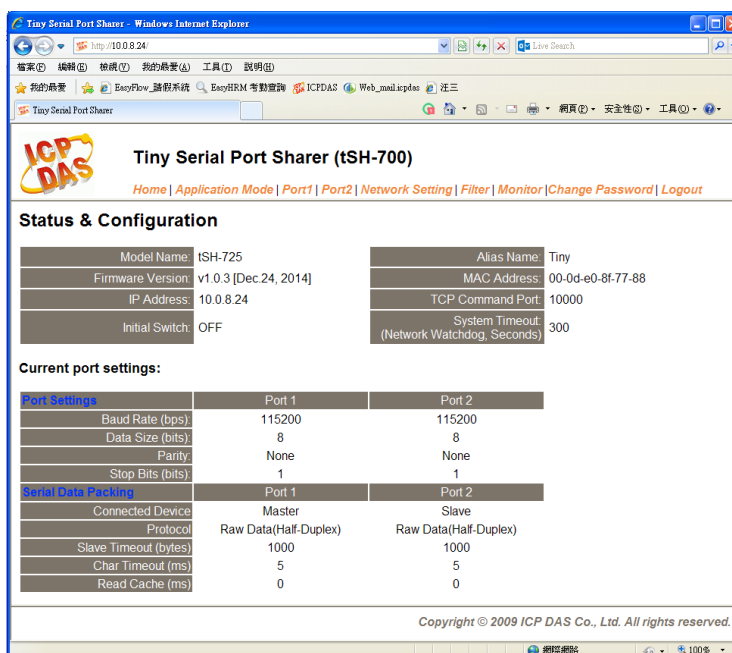
Step 3: Enter the Password

After the main login page is displayed, enter a password (the factory default password is “**admin**”), and then click the “**Submit**” button to continue.



Step 4: Log in to the tSH-700 Web Server

After logging into the tSH-700 web server, the main page will be displayed.





3.2 Home Page

The Home link connects to the main page, which contains two parts.



Tiny Serial Port Sharer (tSH-700)

[Home](#) | [Application Mode](#) | [Port1](#) | [Port2](#) | [Network Setting](#) | [Filter](#) | [Monitor](#) | [Change Password](#) | [Logout](#)

- The first part of this page provides basic information about the tSH-700 hardware and software.

Status & Configuration

Model Name:	tSH-725	Alias Name:	Tiny
Firmware Version:	v1.0.3 [Dec.24, 2014]	MAC Address:	00-0d-e0-8f-77-88
IP Address:	10.0.8.24	TCP Command Port:	10000
Initial Switch:	OFF	System Timeout: (Network Watchdog, Seconds)	300

- The second part of this page provides the status of the port settings and serial data packing.

Current port settings:

Port Settings	Port 1	Port 2
Baud Rate (bps):	115200	115200
Data Size (bits):	8	8
Parity:	None	None
Stop Bits (bits):	1	1
Serial Data Packing	Port 1	Port 2
Connected Device	Master	Slave
Protocol	Raw Data(Half-Duplex)	Raw Data(Half-Duplex)
Slave Timeout (bytes)	1000	1000
Char Timeout (ms)	5	5
Read Cache (ms)	0	0



3.3 Application Mode



Tiny Serial Port Sharer (tSH-700)

Home | **Application Mode** | Port1 | Port2 | Network Setting | Filter | Monitor | Change Password | Logout

The **Application Mode** section enables user to configure the operations of the module. The available application modes are RAW Data (Full-Duplex), RAW Data (Half-Duplex) and Modbus RTU/ASCII Converter.

Application Mode Settings

Model Name:	tSH-725	Alias Name:	Tiny
Firmware Version:	v1.0.3 [Dec.24, 2014]	MAC Address:	00-0d-e0-8f-77-88
IP Address:	10.0.8.9	TCP Command Port:	10000
Initial Switch:	OFF	System Timeout (Network Watchdog, Seconds):	300

Application Mode Port Setting Update

RAW Data (Full-Duplex):

RAW Data (Half-Duplex):

Modbus RTU/ASCII Converter:

Port1: , Port2: , Port3:

Slave Devices Connected on : Port 1 Port 2 Port 3



Protocol : Port1: , Port2: , Port3:

Slave Devices Connected on : Port 1 Port 2 Port 3


Slave Timeout (ms):



The following is an overview of the parameters contained in the Application Mode section:

Item	Description
Application Mode	
<p>RAW Data (Full-Duplex)</p>	<p>This function allows two devices to communicate with each other using different baud rates and data formats.</p>  <p>Port1: <input type="text" value="Enable"/> , Port2: <input type="text" value="Enable"/> , Port3: <input type="text" value="Disable"/></p> <p>When the status of the COM Port is “enable” that means the data transmission in these two devices can just like Full-duplex, the data can be transmitted in both directions at the same time.</p> <p>Note: The full-duplex communication is only available for RS-232 and RS-422 when data length is smaller than 512 bytes of the serial buffer.</p>
<p>RAW Data (Half-Duplex)</p>	<p>This function allows two masters share all slave devices in RAW Data transmission with different Baud Rates.</p>  <p>Slave Devices Connected on : <input type="radio"/> Port 1 <input checked="" type="radio"/> Port 2 <input type="radio"/> Port 3</p> <p>In “Slave Device Connected on:” option, select the COM port which the slave device connected to.</p>



Item	Description
<p>Modbus RTU/ASCII Converter</p>	<p>This function allows two masters share slave devices with Modbus protocols and Baud Rates conversion.</p>  <p>Protocol : Port1: <input type="text" value="RTU"/> , Port2: <input type="text" value="RTU"/> , Port3: <input type="text" value="RTU"/></p> <p>Slave Devices Connected on : <input type="radio"/> Port 1 <input checked="" type="radio"/> Port 2 <input type="radio"/> Port 3</p> <p>In “Protocol:” option, set the Modbus protocol in all port related to master/slave devices.</p> <p>In “Slave Device Connected on:” option, select the COM port which the slave device connected to.</p>
<p>Slave Timeout (ms)</p>	<p>Set the waiting time after last Tx of the request sent from the tSH-700 to device. If the device does not respond within the timeout value, the tSH-700 will skip and process next request.</p> <p>Note that the Slave timeout in the port which the Slave Device connected on must be smaller than the timeout value in your application software (e.g. Modbus Poll, Modbus Utility, etc.). It cannot be less than 100 ms.</p> <p>Default: 1000 ms</p>
<p>Submit</p>	<p>Click this button to save the revised settings to the tSH-700.</p>





3.4 Serial Port Page



Tiny Serial Port Sharer (tSH-700)

[Home](#) |
 [Application Mode](#) |
 [Port1](#) |
 [Port2](#) |
 [Network Setting](#) |
 [Filter](#) |
 [Monitor](#) |
 [Change Password](#) |
 [Logout](#)

The **Port Settings** section provides basic information related to the hardware and software for the tSH-700 module, including the Firmware version and the IP Address, etc. and then provides functions allowing items such as port settings and sharer settings to be configured.

3.4.1 Port1 Settings

Port 1 Settings

Model Name:	tSH-725	Alias Name:	Tiny
Firmware Version:	v1.0.3 [Dec.24, 2014]	MAC Address:	00-0d-e0-8f-77-88
IP Address:	10.0.8.24	TCP Command Port:	10000
Initial Switch:	OFF	System Timeout: (Network Watchdog, Seconds)	300

Port Settings	Current	Updated
Baud Rate (bps):	115200	115200 bits/S
Data Size (bits):	8	8 bits/character
Parity:	None	None
Stop Bits(bits):	1	1

Sharer Settings	Current	Updated
CRC/LRC Confirm:	NO	NO
Char Timeout (bytes)	5	5 (4 ~ 15, Default: 5)
Read Cache (ms)	0	0 (10, 20... 65530, Disable: 0)

The following is an overview of the parameters contained in the Port1 Settings section:

Item	Description	Default
Port Settings		
Baud Rate (bps)	This parameter is used to set the Baud Rate for the COM ports.	115200
Data Size (bits)	This parameter is used to set the Data Size for the COM ports.	8



Item	Description	Default
Parity	This parameter is used to set the Parity for the COM ports.	None
Stop Bits (bits)	This parameter is used to set the Stop Bits for the COM ports.	1
Sharer Settings		
CRC/LRC Confirm	<p>This parameter is used to enable or disable CRC/LRC Confirm function. This function can check every request/response in CRC partition. If CRC partition is not correct, the command will be skipped.</p> <p>Yes = Enable No = Disable</p>	No
Char Timeout (bytes)	<p>This parameter is used to set the waiting time (based on bytes) that should elapse after last byte of data of the response is received from the slave device is activated. If no more data is received before the timeout period expires, then the transmission of this packet is deemed to have been completed and the tSH-700 begins processing the packet.</p> <p>Valid range: 4 to 15 (bytes);</p>	5
Read Cache (ms)	<p>When sharing Modbus RTU/ASCII device/data between several master devices, the read-cache function can be used to reduce the loading on the serial communication and ensure faster TCP responses.</p> <p>Valid range: 10, 20 to 65530 (ms); Disable = 0.</p>	0
Submit	Click this button to save the revised settings to the tSH-700.	



3.5 Network Setting



Tiny Serial Port Sharer (tSH-700)

[Home](#) |
 [Application Mode](#) |
 [Port1](#) |
 [Port2](#) |
 [Network Setting](#) |
 [Filter](#) |
 [Monitor](#) |
 [Change Password](#) |
 [Logout](#)

3.5.1 Network and Miscellaneous Settings

The **Network and Miscellaneous Settings** page provides basic details of the tSH-700 module and other information related to the hardware and software.

Network and Miscellaneous Settings

Model Name:	tSH-725	Alias Name:	Tiny
Firmware Version:	v1.0.3 [Dec.24, 2014]	MAC Address:	00-0d-e0-8f-77-88
IP Address:	10.0.8.24	TCP Command Port:	10000
Initial Switch:	OFF	System Timeout: (Network Watchdog, Seconds)	300

The software and hardware information section includes information related to the Model Name, the current Firmware version, the IP Address, the current position of the Initial Switch, the Alias, the MAC Address, and the TCP Port, and the System Timeout values.

If you update the firmware for the tSH-700 module, this page can be used to check the version information of the tSH-700 module software.



3.5.2 IP Address Settings

The **Address Type**, **Static IP Address**, **Subnet Mask** and **Default Gateway** values are the most important network settings and should always correspond to the LAN configuration. If they do not match, the tSH-700 module will not operate correctly. If the settings are changed while the module is operating, any connection currently in use will be lost and an error will occur.

IP Address Settings

IP Address	
Address Type:	<input type="text" value="Static IP"/>
Static IP Address:	<input type="text" value="10"/> <input type="text" value="0"/> <input type="text" value="8"/> <input type="text" value="24"/>
Subnet Mask:	<input type="text" value="255"/> <input type="text" value="255"/> <input type="text" value="255"/> <input type="text" value="0"/>
Default Gateway:	<input type="text" value="10"/> <input type="text" value="0"/> <input type="text" value="8"/> <input type="text" value="254"/>
MAC Address:	<input type="text" value="00-0d-e0-8f-77-88"/> (Format: FF-FF-FF-FF-FF-FF)
<input type="button" value="Update Settings"/>	

The following is an overview of the parameters contained in the IP Address Settings section:

Item	Description
IP Address	
Address Type	Static IP: If no DHCP server is installed on the network, the network settings can be configured manually. Refer to Section 3.5.2.1 Manual Configuration for more details.
	DHCP: The Dynamic Host Configuration Protocol (DHCP) is a network application protocol that automatically assigns an IP address to each device. Refer to Section 3.5.2.2 Dynamic Configuration for more details.
Static IP Address	Each tSH-700 connected to the network must have its own unique IP address. This parameter is used to assign a specific IP address.
Subnet Mask	This parameter is used to assign the subnet mask for the tSH-700 device. The subnet mask indicates which portion of the IP address is used to identify the local network or subnet.
Default Gateway	This parameter is used to assign the IP Address of the Gateway to be used by the tSH-700. A Gateway (or router) is a device that is used to connect an individual network to one or more additional networks.
MAC Address	This parameter is used to set a user-defined MAC address, which must be in the format FF-FF-FF-FF-FF-FF.
Update Settings	Click this button to save the revised settings to the tSH-700.



3.5.2.1 Manual Configuration

When using manual configuration, the network settings should be assigned in the following manner:

- Step 1:** Select the **“Static IP”** option from the **“Address Type”** drop-down menu.
- Step 2:** Enter the relevant details in the respective **network settings** fields.
- Step 3:** Click the **“Update Settings”** button to complete the configuration.

IP Address	
Address Type:	Static IP 1
Static IP Address:	10 . 0 . 8 . 24
Subnet Mask:	255 . 255 . 255 . 0 2
Default Gateway:	10 . 0 . 8 . 254
MAC Address:	00-0d-e0-8f-77-88 (Format: FF-FF-FF-FF-FF-FF)
Virtual COM	
TCP Command Port:	10000 (Default: 10000)
Command Port Timeout (Socket Watchdog):	180 (1 ~ 65535 seconds, 30=default, 0=)
	3 Update Settings

3.5.2.2 Dynamic Configuration

Dynamic configuration is very easy to perform. If a DHCP server is connected to you network, a network address can be dynamically configured by using the following procedure:

- Step 1:** Select the **“DHCP”** option from the **“Address Type”** drop-down menu.
- Step 2:** Click the **“Update Settings”** button to complete the configuration.

IP Address Settings

IP Address	
Address Type:	DHCP 1
Static IP Address:	10 . 0 . 8 . 24
Subnet Mask:	255 . 255 . 255 . 0
Default Gateway:	10 . 0 . 8 . 254
MAC Address:	00-0d-e0-8f-77-88 (Format: FF-FF-FF-FF-FF-FF)
Virtual COM	
TCP Command Port:	10000 (Default: 10000)
Command Port Timeout (Socket Watchdog):	180 (1 ~ 65535 seconds, 30=default, 0=)
	2 Update Settings



3.5.3 General Settings

The General Settings provides functions allowing items such as the Alias Name, System Timeout value, UART Watchdog value, Auto-logout value and Debug Message (UDP), etc. to be configured.

General Settings

Network	
Ethernet Speed:	Auto (Auto=10/100 Mbps Auto-negotiation)
Web Auto-logout:	10 (1 ~ 255 minutes, 10=default, 0=disable)
UDP Configuration:	Enable (Enable/Disable the UDP Configuration, Enable=default.)
UDP Alarm	
Alarm IP Address(UDP):	255 . 255 . 255 . 255
Alarm Port(UDP):	54300
Misc.	
Alias Name:	Tiny (Max. 18 chars)
UART Watchdog:	Tx:0 Rx:0 (30 ~ 65535 seconds, 0=default=disable) Action=Reboot
Debug Message(UDP):	20 (1 ~ 255 seconds, 20=default, 0=disable)
Update Settings	

The following is an overview of the parameters contained in the General Settings section:

Item	Description	Default
Network		
Ethernet Speed	This parameter is used to set the Ethernet speed. The default value is Auto (Auto = 10/100 Mbps Auto-negotiation).	Auto
Web Auto-logout	This parameter is used to configure the automatic logout value. If there is no activity on the web server for a certain period of time, the current user account will be automatically logged out. Range: 1 to 65535 (minutes); Disable = 0.	10
UDP Configuration	This parameter is used to enable or disable UDP configuration function.	Enable
UDP Alarm		
Alarm IP Address (UDP)	The tSH-700 can send and UDP package (include alarm message) to specified network location (Alarm IP Address/Port).	
Alarm Port (UDP)		



Item	Description	Default
Misc.		
Alias Name	This parameter is used to assign an alias for each tSH-700 to assist with easy identification.	Tiny
UART Watchdog	If the serial port does not communication occurs for a certain period, the system will be rebooted based on the UART Watchdog value. Settings range: 30 ~ 65535 (seconds); Disable: 0.	0
Debug Message(UDP)	Reserved.	20
Update Settings	Click this button to save the revised settings to the tSH-700.	





3.5.4 Restore Factory Defaults

Restore Factory Defaults

Restore all options to their factory default states:

Forced Reboot

➤ Use the following procedure to reset all parameters to their original factory default settings:

Step 1: Click the “Restore Defaults” button to reset the configuration.

Step 2: Click the “OK” button in the message dialog box.

Step 3: Check whether the module has been reset to the original factory default settings for use with the eSearch Utility. Refer to [Chapter 3 Setting up the tSH-700 Module](#) for more details.

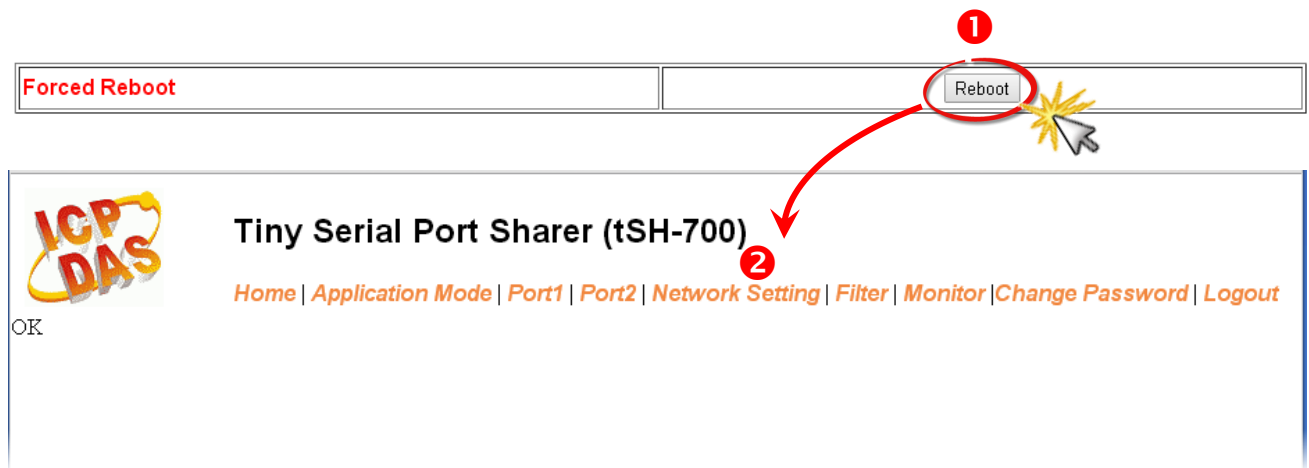
Restore Factory Defaults

The following is an overview of the factory default settings:

Factory Default Settings	
Network Settings	
IP Address	192.168.255.1
Gateway Address	192.168.0.1
Subnet Mask	255.255.0.0
DHCP	OFF
Basic Settings	
Alias	Tiny



- The **Forced Reboot** function: can be used to force the tSH-700 to reboot or to remotely reboot the device.





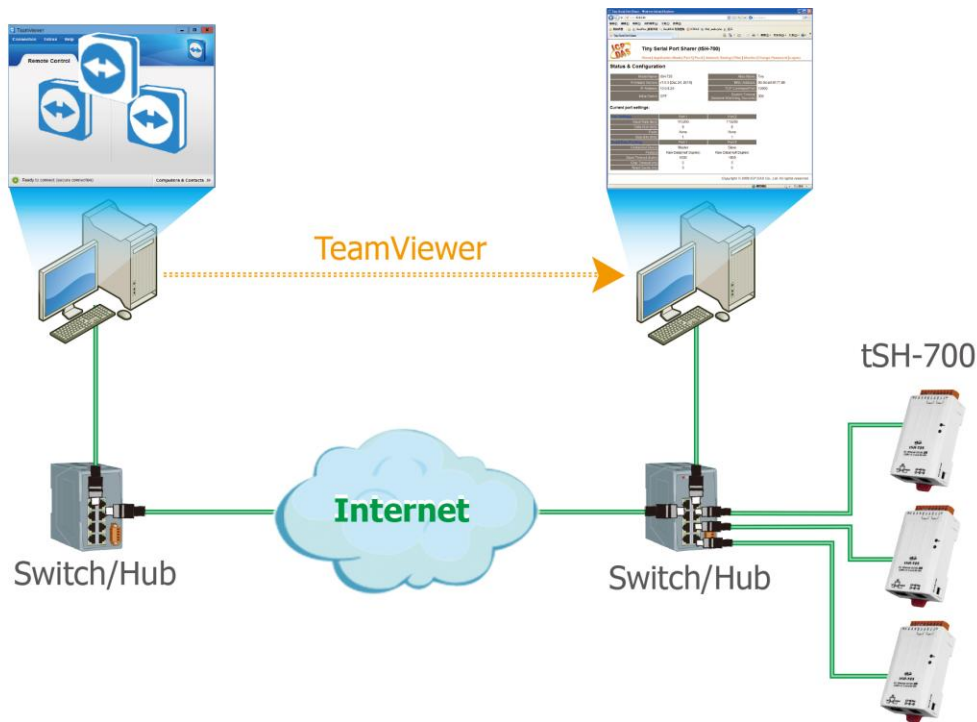
3.5.5 Firmware Update

Firmware Update

If the remote firmware update is failed, then the traditional firmware update (on-site) is required to make the module working again

Update

Firmware update requires initialization and local network operations. Traditional firmware update requires adjusting the Init/Run Switch and reboots the module manually for the initialization of firmware update, while new firmware allows user to initialize the module via web interface without adjusting the hardware switch. Initialization via web is useful when module is installed in remote site and can be accessed by a remote PC via TeamViewer.



Note: If the remote firmware update is failed, then the traditional firmware update (on-site) is required to make the module working again.

For detailed information regarding how to use this function to update the Firmware for your tSH-700 series module, refer to the **tSH_Firmware_Update_v10_en.pdf**. The location of the user manual on the CD and the download address are shown below:



CD:\\ NAPDOS\\tSH-700\\Firmware\\



<http://ftp.icpdas.com/pub/cd/tinymodules/napdos/tsh-700/firmware/>



3.6 Filter Page



Tiny Serial Port Sharer (tSH-700)

[Home](#) | [Application Mode](#) | [Port1](#) | [Port2](#) | [Network Setting](#) | **[Filter](#)** | [Monitor](#) | [Change Password](#) | [Logout](#)

3.6.1 Accessible IP Settings (white list)

The **Accessible IP Settings** section is used to query or edit the IP Filter List. The IP Filter List restricts the access of packets based on the IP header. If one or more IP address are saved to the IP Filter table, only clients whose IP is specified in the IP Filter List can access the tSH-700.

Accessible IP (filter is disabled when all zero):

IP Filter List	IP Address
IP0:	0.0.0.0
IP1:	0.0.0.0
IP2:	0.0.0.0
IP3:	0.0.0.0
IP4:	0.0.0.0

Add ... To The List
 Add Range ... & Mask: ...
 Delete IP# (Number: 0 ~ 4)
 Delete ALL
 Save Configuration (finish)

The following is an overview of the parameters contained in the Filter Settings (white list) section:

Item	Description
Add "IP" To The List	Add an IP address to the IP Filter List.
Add Range "IP"& Mask "IP"	Add an IP address range to the IP Filter List.
Delete IP# "Number"	Delete a specific IP# address from the IP Filter List. (Number: 0 ~ 4)
Delete All	Delete all items from the IP Filter List.
Save Configuration (finish)	Save a new IP Filter List to the Flash memory.
Submit	Click this button to save the revised settings to the tSH-700.



3.7 Monitor Page

After clicking the **Monitor** tab, the Current Connection Status page will be displayed showing detailed information regarding the current status of the serial port connection settings for the tSH-700 module.



Tiny Serial Port Sharer (tSH-700)

[Home](#) | [Application Mode](#) | [Port1](#) | [Port2](#) | [Network Setting](#) | [Filter](#) | **Monitor** | [Change Password](#) | [Logout](#)

Current Status(UART):

Port Number	Port 1	Port 2
Last Tx Count (bytes):	0	0
Last Rx Count (bytes):	0	0
Total Tx Count (bytes):	0	0
Total Rx Count (bytes):	0	0

3.8 Change Password

After clicking the **Password** tab, the **Change Password** page will be displayed. To change a password, first enter the old password in the **“Current password”** field (use the default password **“admin”**) and then enter a new password in the **“New password”** field. Re-enter the new password in the **“Confirm new password”** field, and then click the **“Submit”** button to update the password.



Tiny Serial Port Sharer (tSH-700)

[Home](#) | [Application Mode](#) | [Port1](#) | [Port2](#) | [Network Setting](#) | [Filter](#) | [Monitor](#) | **Change Password** | [Logout](#)

Change Password

The length of the password is 12 characters maximum.

Current password:	<input type="password" value="•••••"/>
New password:	<input type="password" value="••••"/>
Confirm new password:	<input type="password" value="••••"/> <input type="button" value="Submit"/>



3.9 Logout Page

After clicking the **Logout** tab, you will be immediately logged out from the system and be returned to the login page.



Tiny Serial Port Sharer (tSH-700)

[Home](#) | [Application Mode](#) | [Port1](#) | [Port2](#) | [Network Setting](#) | [Filter](#) | [Monitor](#) | [Change Password](#) | **Logout**

The system is logged out.

To enter the web configuration, please type password in the following field.

Login password:

Note:

This web configuration requires JavaScript enabled in your browser (Firefox, IE...).
If the web configuration does not work, please check the JavaScript settings first.

When using IE, please disable its cache as follows.

Menu items: Tools \ Internet Options... \ General \ Temporary Internet Files \ Settings... \ Every visit to the page